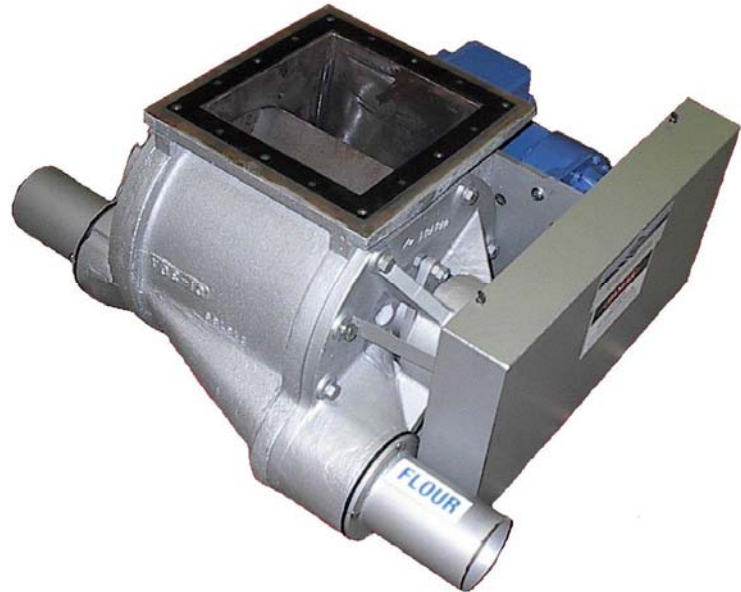
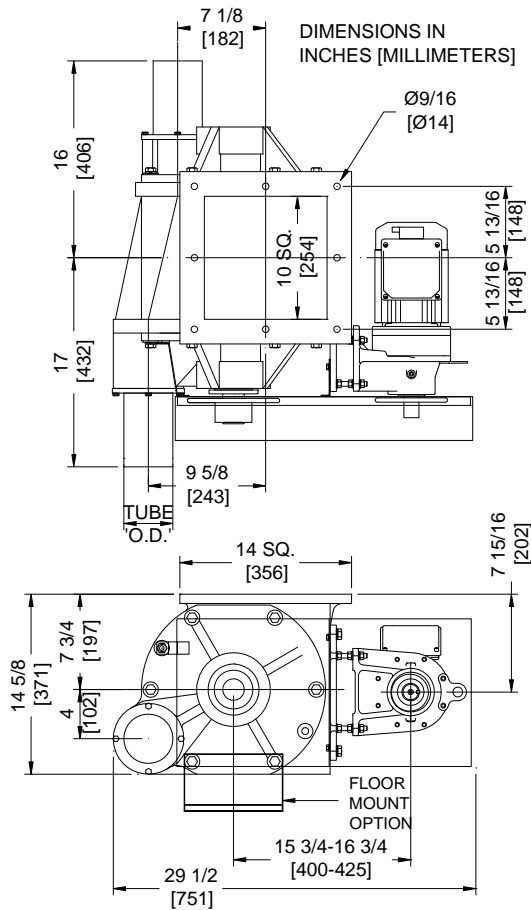




THE FRED D. PFENING COMPANY
DEDICATED TO THE BAKING
INDUSTRY SINCE 1919

MODEL 12 FEEDER



The Model 12 is a blow-through rotary airlock feeder typically mounted under a bin for steady feeding of bulk material into a pneumatic conveying line.

The Model 12 includes:

- Industrial cast iron body for rigidity.
- Rugged steel rotor with oversize shaft for minimal deflection.
- Precision machining for smooth action and effective seal.
- Outboard bearings with inboard shaft seals for long bearing life and easy seal replacement.
- High efficiency cyclo-gearmotor with OSHA chain guard.
- Horizontal motor minimizes over-head clearance required.

Standard Specifications

Displacement: 0.64 ft³/rev.
Operating RPM: 0 to 40
Tube O.D.: 4" to 5"
Construction:
 Cast Iron & Steel
 Optional: Stainless Steel
Electrical:
Voltage: 208-230-460V/3/60
 other voltages available
Motor: 3/4 HP TEFC
Weight: 570 lbs. (455 lbs. no drive)
 259 kg. (206 kg. no drive)

STANDARD FEATURES	FLOUR FEEDER	SUGAR FEEDER
Capacity	Up to 400 lbs./min. 182 kg./min.	Up to 450 lbs./min. 205 kg./min.
Rotor Vane	Standard	Beveled rotor tips Skewed rotor vanes
Rotor Clearance	.002" - .005"	.007" - .009"
Rotor Shaft Seals	PTFE impregnated packing w/ external gland	Pfening GR-4 air purge type airseal

THE FRED D. PFENING COMPANY
MANUFACTURERS OF
MATERIAL HANDLING, PROOFING,
AND LIQUID METERING SYSTEMS
Visit us at www.pfening.com

1075 WEST FIFTH AVENUE
COLUMBUS, OHIO 43212
PH. (614) 294-5361
FAX (614) 294-1633
email: sales@pfening.com

SPECIFY TO ORDER:

- PFENING MODEL 12 FEEDER
- EITHER FLOUR OR SUGAR
- EITHER WITH OR WITHOUT DRIVE
- RPM OR LBS/MIN. IF W/DRIVE