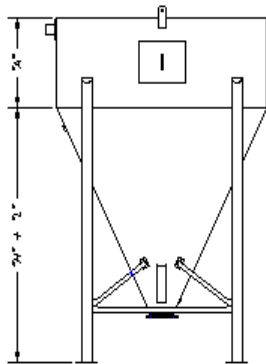
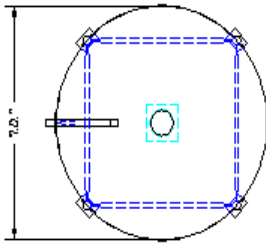




## USE BIN

The Use Bin is designed for intermediate storage of material from a conveying system.



The Use Bin includes:

- Capacities from 2,000 – 30,000 lb.
- Sanitary stainless steel, mild steel, or aluminum construction.
- Meets BISSC standards; has continuous, sanitary welds throughout.
- Full size access door with handknobs.
- Custom design configurations to meet installation requirements.
- Dual discharge available.
- Two-piece designs for transport through narrow doorways.
- Standard Equipment includes: Level sensors, Manual side gate, Dust collector, Support legs, Vibrator, and Fluidizer assembly.
- Optional Equipment includes: Airslide Discharge, Bin Activator Discharge, Screw Feeder Discharge, and Compression Load Cells.



CAPACITY (LBS)	2500 - 5000	5000 - 7500	7500 - 10000	10000 - 15000	15000 - 20000	15000 - 30000
DIAMETER ("I.D.")	4' - 9"	5' - 9"	6' - 9"	7' - 9"	8' - 9"	9' - 9"
CONE HEIGHT ("H + L")	5' - 6"	6' - 6"	7' - 6"	8' - 6"	9' - 3"	10' - 3"
STRAIGHT SECT. HT ("A")	4' to 7'	4' to 7'	4' to 7'	4' to 7'	4' to 7'	3' to 8'

THE FRED D. PFENING COMPANY  
MANUFACTURERS OF  
MATERIAL HANDLING, PROOFING,  
AND LIQUID METERING SYSTEMS  
Visit us at [www.pfening.com](http://www.pfening.com)

1075 WEST FIFTH AVENUE  
COLUMBUS, OHIO 43212  
PH. (614) 294-5361  
FAX (614) 294-1633  
email: [sales@pfening.com](mailto:sales@pfening.com)

SPECIFY TO ORDER:

- CONTACT A PFENING SALES ENGINEER FOR ASSISTANCE IN SPECIFYING YOUR SCALE HOPPER.