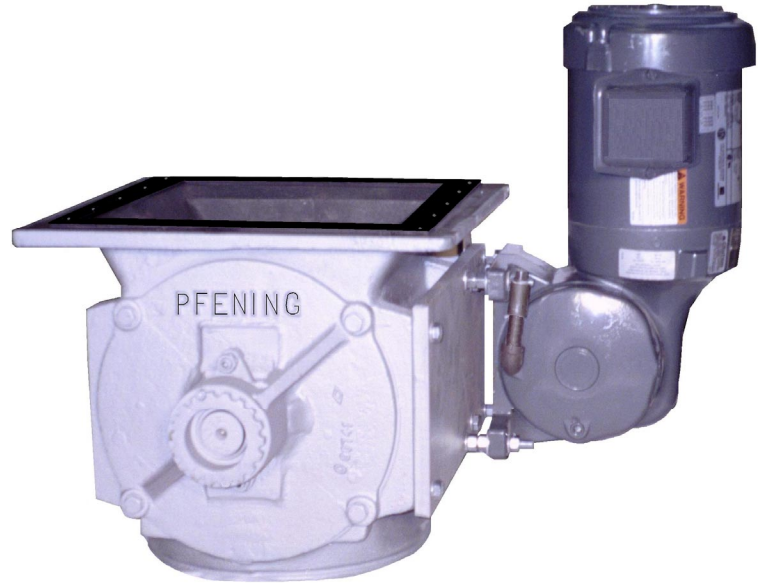
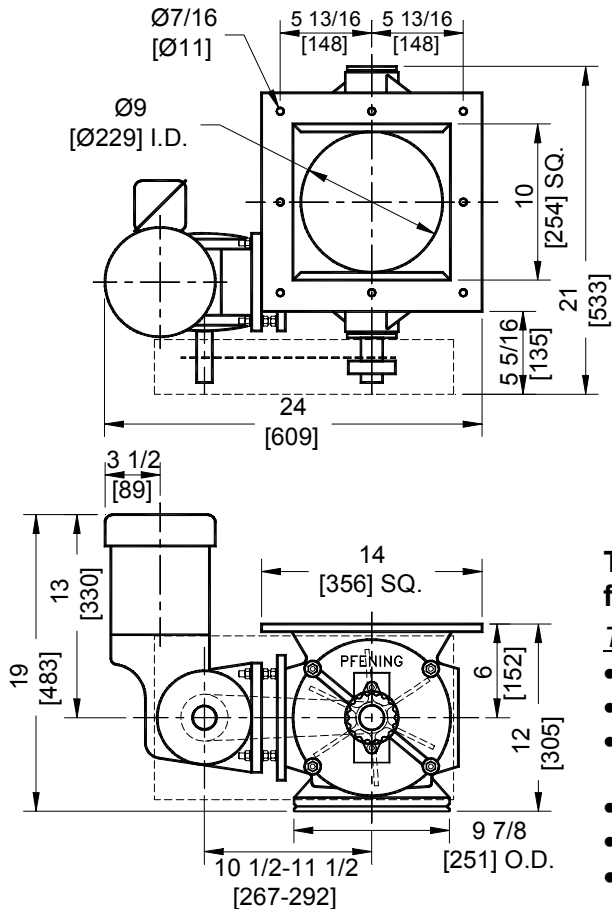




THE FRED D. PFENING COMPANY  
DEDICATED TO THE BAKING  
INDUSTRY SINCE 1919

## MODEL 30 AIRLOCK

DIMENSIONS IN  
INCHES [MILLIMETERS]



**The Model 30 is a drop-through rotary airlock for steady feeding of bulk material from a storage bin or hopper.**

The Model 30 includes:

- Cast iron body for durability.
- Rugged steel rotor, precision machined for smooth operation.
- Outboard bearings with inboard shaft seals for long bearing life and easy seal replacement.
- Gearmotor drive with OSHA chain guard.
- Vertical motor mount to minimize surface dust accumulation.
- Round discharge for easy connection of flexible sleeve.

### Standard Specifications

**Displacement:** 0.29 ft<sup>3</sup>/rev.  
**Operating RPM:** 0 to 40  
**Construction:**  
*Body & Endplates:* Cast Iron  
*Rotor:* Steel  
**Electrical:**  
*Voltage:* 208-230-460V/3/60  
 other voltages available  
*Motor:* 1/3 HP TEFC  
**Weight:** 185 lbs. (125 lbs. no drive)  
 84 kg. (57 kg. no drive)

STANDARD FEATURES	FLOUR AIRLOCK	SUGAR AIRLOCK
Capacity	Up to 250 lbs./min. 113 kg./min.	Up to 300 lbs./min. 136 kg./min.
Rotor Vane	Standard	Beveled rotor tips
Rotor Clearance	.008" - .012"	.008" - .012"
Rotor Shaft Seals	PTFE impregnated packing w/ external gland	Pfening GR-4 air purge type airseal

THE FRED D. PFENING COMPANY  
MANUFACTURERS OF  
MATERIAL HANDLING, PROOFING,  
AND LIQUID METERING SYSTEMS  
Visit us at [www.pfening.com](http://www.pfening.com)

1075 WEST FIFTH AVENUE  
COLUMBUS, OHIO 43212  
PH. (614) 294-5361  
FAX (614) 294-1633  
email: [sales@pfening.com](mailto:sales@pfening.com)

SPECIFY TO ORDER:

- PFENING MODEL 30 AIRLOCK
- EITHER FLOUR OR SUGAR
- EITHER WITH OR WITHOUT DRIVE
- RPM OR LBS./MIN. IF W/ DRIVE